

EPILEPSY

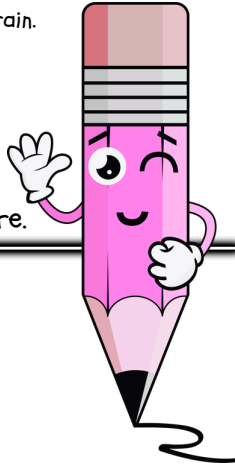
A neurological condition causing recurrent seizures due to abnormal electrical activity in the brain.

SEIZURE

Sudden surge of electrical activity in the brain.

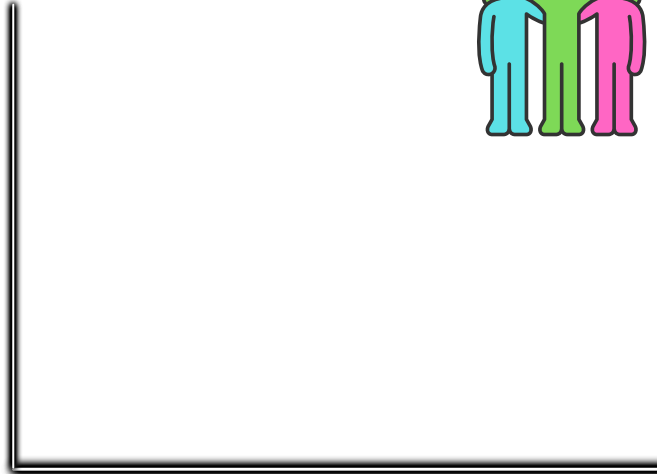
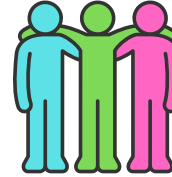


Do you know what the brain looks like? Try drawing one here.



Each person is different, that's what makes meeting new friends so fun. Friends accept each other for who they are. If you know someone who has epilepsy, talking to your friend about their seizures will help you understand and not be afraid if they have one. It will also help you know what to do if they have a seizure when you are with them.

DRAW A PICTURE OF YOU AND YOUR FRIENDS TO SHOW HOW SPECIAL IT IS TO HAVE FRIENDS.



SEIZE THE WORD SEARCH

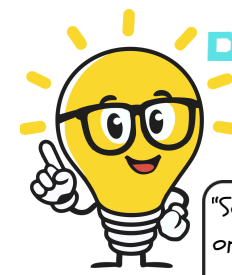
Find these words about Epilepsy in the puzzle below

U P S A F E S Q C W H K C Z Y
 H U O M K V B P S Z W R E O C
 C B K K I N D N E S S H N F R
 A D N E O U W E J A A E K H Q
 U X A M E M O R Y G U L Q K V
 S P N A K H H Y Q S F P R S J
 W E E L X Z P E M P I F U I G
 S B I E G A Y V E T Z D F T J
 G C R Z I P D X X E N H E Z T
 L A X A U B T H I N K E A H I
 N L P E I R O N N V U D R K M
 M M C Z L N E T D X A C W V E
 S T A Y G E P I L E P S Y A E
 K S L W Q U F M A J V M D E U
 I D L V W U M F I Q T X Y S V



- | | | | |
|----------|---------|----------|------|
| Epilepsy | Seizure | Kindness | Stay |
| Memory | Think | Brain | Safe |
| Side | Help | Nerve | Call |
| Time | | Calm | |

DID YOU KNOW?

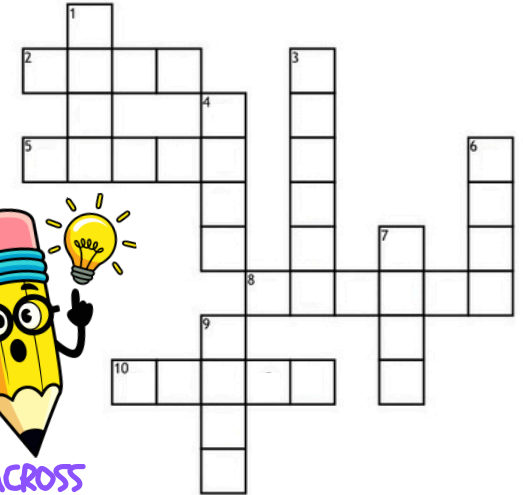


"Having epilepsy doesn't stop you from having fun just like your friends."

"Sometimes a seizure can look scary, but once you understand why someone has a seizure you don't have to be afraid."

A SEIZURE DOESN'T CHANGE WHO THEY ARE, THEY'RE STILL YOUR FRIEND!

EPILEPSY CROSSWORD PUZZLE



ACROSS

- How we try to feel during a seizure
- A person who helps keep us healthy
- What we do when someone needs support
- Being nice to others
- What your body needs to feel better
- Feeling protected and okay

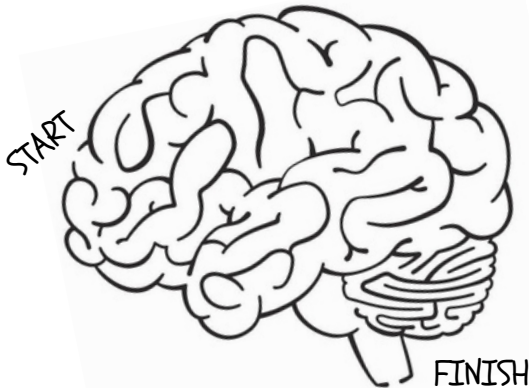
DOWN

- Showing love and kindness
- What you do when you're happy
- Someone who cares about you
- The part of your body that helps you think

Epilepsy and the Brain

Having a seizure is like getting confused in a maze. Once in a while, the nerve cells in your brain become confused for a brief moment causing uncontrollable body movements.

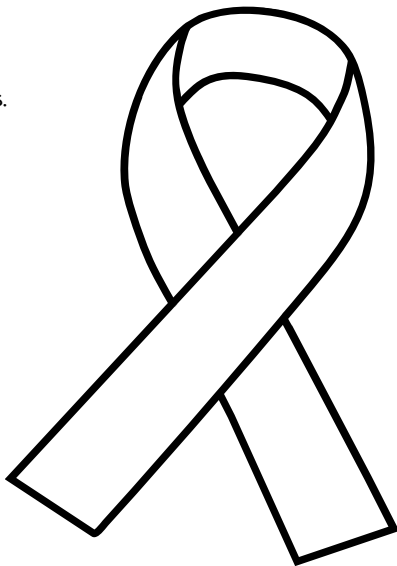
HELP THE NERVE CELLS IN THE BRAIN FIND A PATH TO SEND MESSAGES TO OTHER PARTS OF THE BODY.



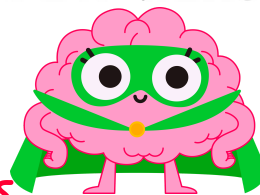
BE KIND

Purple is the special color for epilepsy. It stands for being brave, kind, and supporting others. March 26th is called Purple Day. It's a day when people all around the world learn about epilepsy and help others understand it better. Wearing purple on this day shows you care, want to help, and that no one with epilepsy is alone!

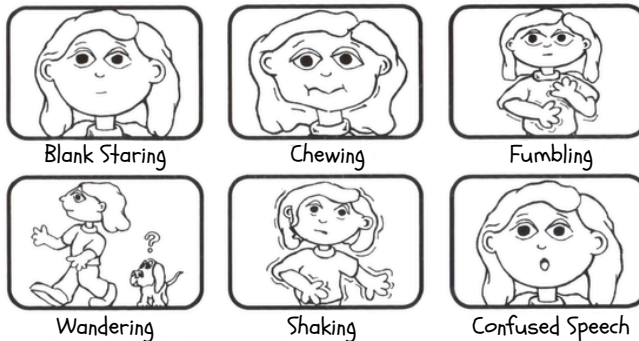
DESIGN YOUR PURPLE RIBBON



Be a SEIZURE SAFETY HERO with the 3 S's!



RECOGNIZE SEIZURE SYMPTOMS



FOLLOW THE 3 S's



Be Brave

BRAIN POWER

& BRAVE FRIENDS

ACTIVITY TIME!

